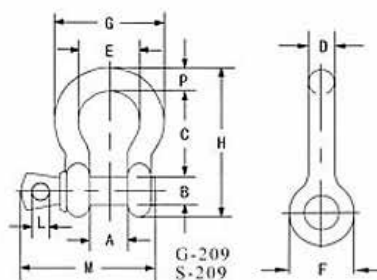




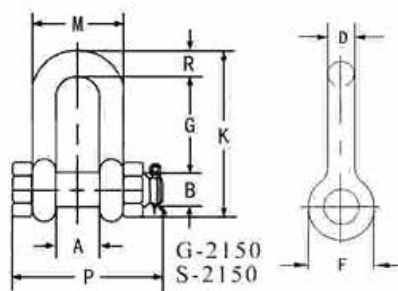
ШЕГЕЛ - ОМЕГА С БОЛТ [G-209]



КОД	ТЕГЛО	НОМИНАЛЕН РАЗМЕР	ТОВАРО- ПОДЕМНОСТ	РАЗМЕРИ (мм)										
				A	B	C	D	E	F	G	H	L	M	P
KK01A01	0.03	3/16	1/3	9.65	6.35	22.40	4.85	15.20	14.20	24.90	37.30	4.06	28.04	4.85
KK01A02	0.05	1/4	1/2	11.90	7.85	28.70	6.35	19.80	15.50	32.50	46.70	4.85	35.10	6.35
KK01A03	0.09	5/16	3/4	13.50	9.65	31.00	7.85	21.30	19.10	37.30	53.00	5.60	42.20	7.85
KK01A04	0.14	3/8	1	16.80	11.20	36.60	9.65	26.20	23.10	45.20	63.00	6.35	51.50	9.65
KK01A05	0.17	7/16	1-1/2	19.10	12.70	42.90	11.20	29.50	26.90	51.50	74.00	7.85	60.50	11.20
KK01A06	0.33	1/2	2	20.60	16.00	47.80	12.70	33.30	30.20	58.50	83.50	9.65	68.50	12.70
KK01A07	0.62	5/8	3-1/4	26.90	19.10	60.50	16.00	42.90	38.10	74.50	106.00	11.20	85.00	17.50
KK01A08	1.07	3/4	4-3/4	31.80	22.40	71.50	19.10	51.00	46.00	89.00	126.00	12.70	101.00	20.60
KK01A09	1.64	7/8	6-1/2	36.60	25.40	84.00	22.40	58.00	53.00	102.00	148.00	12.70	114.00	24.60
KK01A10	2.28	1	8-1/2	42.90	28.70	95.50	25.40	68.50	60.50	119.00	167.00	14.20	129.00	26.90
KK01A11	3.36	1-1/8	9-1/2	46.00	31.80	108.00	29.50	74.00	68.50	131.00	190.00	16.00	142.00	31.80
KK01A12	4.31	1-1/4	12	51.50	35.10	119.00	32.80	82.50	76.00	146.00	210.00	17.50	156.00	35.10
KK01A13	6.14	1-3/8	13-1/2	57.00	38.10	133.00	36.10	92.00	84.00	162.00	233.00	19.10	174.00	38.10
KK01A14	7.80	1-1/2	17	60.50	41.40	146.00	39.10	98.50	92.00	175.00	254.00	20.60	187.00	41.10
KK01A15	12.60	1-3/4	25	73.00	51.00	178.00	46.70	127.00	106.00	225.00	313.00	25.40	231.00	57.00
KK01A16	20.40	2	35	82.50	57.00	197.00	53.00	146.00	122.00	253.00	348.00	31.00	263.00	61.00
KK01A17	38.90	2-1/2	55	105.00	70.00	267.00	69.00	184.00	145.00	327.00	453.00	35.10	330.00	79.50



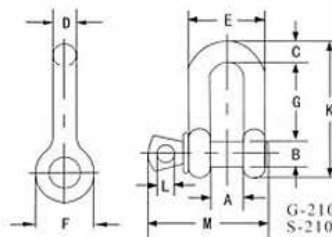
ШЕГЕЛ - ПРАВ С БОЛТ И ГАЙКА [G-2150]



КОД	ТЕГЛО	НОМИНАЛЕН РАЗМЕР	ТОВАРО-ПОДЕМНОСТ	РАЗМЕРИ (мм)										
				A	B	C	D	E	F	G	H	L	M	P
KK06A01	-	3/16	1/3	9.65	6.35	22.40	4.85	15.20	14.20	-	37.30	24.90	-	32.77
KK06A02	0.06	1/4	1/2	11.90	7.85	28.70	6.35	19.80	15.50	19.05	46.70	32.50	15.49	39.62
KK06A03	0.10	5/16	3/4	13.50	9.65	31.00	7.85	21.30	19.10	25.40	53.00	37.30	19.05	46.23
KK06A04	0.15	3/8	1	16.80	11.20	36.60	9.65	26.20	23.10	30.99	63.00	45.20	23.11	55.12
KK06A05	0.22	7/16	1-1/2	19.10	12.70	42.90	11.20	29.50	26.90	36.09	74.00	51.50	41.15	63.75
KK06A06	0.34	1/2	2	20.60	16.00	47.80	12.70	33.30	30.20	41.04	83.50	58.50	45.97	71.12
KK06A07	0.67	5/8	3-1/4	26.90	19.10	60.50	16.00	42.90	38.10	50.80	106.00	74.50	58.67	89.66
KK06A08	1.14	3/4	4-3/4	31.80	22.40	71.50	19.10	51.00	46.00	60.45	126.00	89.00	69.85	103.38
KK06A09	1.74	7/8	6-1/2	36.60	25.40	84.00	22.40	58.00	53.00	71.37	148.00	102.00	81.03	119.63
KK06A010	2.52	1	8-1/2	42.90	28.70	95.50	25.40	68.50	60.50	81.03	167.00	119.00	93.73	134.87
KK06A011	3.45	1-1/8	9-1/2	46.00	31.80	108.00	28.70	74.00	68.50	90.93	190.00	131.00	103.12	149.86
KK06A012	4.90	1-1/4	12	51.50	35.10	119.00	31.80	82.50	76.00	100.08	210.00	146.00	115.06	165.35
KK06A013	6.24	1-3/8	13-1/2	57.00	38.10	133.00	35.10	92.00	84.00	111.25	233.00	162.00	127.00	183.13
KK06A014	8.39	1-1/2	17	60.50	41.40	146.00	38.10	98.50	92.00	122.17	254.00	175.00	136.05	196.34
KK06A015	14.20	1-3/4	25	73.00	51.00	178.00	44.50	127.00	106.00	146.05	313.00	225.00	162.05	229.87
KK06A016	21.20	2	35	82.50	57.00	197.00	51.00	146.00	122.00	171.45	348.00	253.00	184.15	264.41
KK06A017	38.60	2-1/2	55	105.00	70.00	267.00	66.50	184.00	145.00	203.20	453.00	327.00	238.25	344.42
KK06A018	56.00	3	85	127.00	82.50	330.00	76.00	200.00	165.00	215.90	546.00	365.00	279.40	419.10
KK06A019	-	3-1/2	120	133.00	95.50	372.00	92.00	229.00	203.00	-	626.00	419.00	-	482.60
KK06A020	-	4	150	140.00	108.00	368.00	104.00	254.00	229.00	-	653.00	468.00	-	501.65



ШЕГЕЛ - ПРАВ С БОЛТ [G-210]



КОД	ТЕГЛО	НОМИНАЛЕН РАЗМЕР	ТОВАРО- ПОДЕМНОСТ	РАЗМЕРИ (мм)										
				A	B	C	D	E	F	G	H	L	M	P
KK02A01	-	3/16	1/3	9.65	6.35	22.40	4.85	15.20	14.20	24.90	37.30	4.06	28.40	4.85
KK02A02	0.05	1/4	1/2	11.90	7.85	28.70	6.35	19.80	15.50	32.50	46.70	4.85	35.10	6.35
KK02A03	0.08	5/16	3/4	13.50	9.65	31.00	7.85	21.30	19.10	37.30	53.00	5.60	42.20	7.85
KK02A04	0.13	3/8	1	16.80	11.20	36.60	9.65	26.20	23.10	45.20	63.00	6.35	51.50	9.65
KK02A05	0.20	7/16	1-1/2	19.10	12.70	42.90	11.20	29.50	26.90	51.50	74.00	7.85	60.50	11.20
KK02A06	0.27	1/2	2	20.60	16.00	47.80	12.70	33.30	30.20	58.50	83.50	9.65	68.50	12.70
KK02A07	0.57	5/8	3-1/4	26.90	19.10	60.50	16.00	42.90	38.10	74.50	106.00	11.20	85.00	17.50
KK02A08	1.20	3/4	4-3/4	31.80	22.40	71.50	19.10	51.00	46.00	89.00	126.00	12.70	101.00	20.60
KK02A09	1.43	7/8	6-1/2	36.60	25.40	84.00	22.40	58.00	53.00	102.00	148.00	12.70	114.00	24.60
KK02A10	2.15	1	8-1/2	42.90	28.70	95.50	25.40	68.50	60.50	119.00	167.00	14.20	129.00	26.90
KK02A11	3.06	1-1/8	9-1/2	46.00	31.80	108.00	29.50	74.00	68.50	131.00	190.00	16.00	142.00	31.80
KK02A12	4.11	1-1/4	12	51.50	35.10	119.00	32.80	82.50	76.00	146.00	210.00	17.50	156.00	35.10
KK02A13	5.28	1-3/8	13-1/2	57.00	38.10	133.00	36.10	92.00	84.00	162.00	233.00	19.10	174.00	38.10
KK02A14	7.23	1-1/2	17	60.50	41.40	146.00	39.10	98.50	92.00	175.00	254.00	20.60	187.00	41.10
KK02A15	12.10	1-3/4	25	73.00	51.00	178.00	46.70	127.00	106.00	225.00	313.00	25.40	231.00	57.00
KK02A16	19.20	2	35	82.50	57.00	197.00	53.00	146.00	122.00	253.00	348.00	31.00	263.00	61.00
KK02A17	32.50	2-1/2	55	105.00	70.00	267.00	69.00	184.00	145.00	327.00	453.00	35.10	330.00	79.50